



Android Control Card Y08

Instructions

Version: Ver.1.1

Statement

Dear user friend , thanks for choosing SHENZHEN SYSOLUTION TECHNOLOGY CO.,LTD (hereinafter referred to as Xixun Technology) as your LED advertising equipment control system. The main purpose of this document is to help you quickly understand and use the product. We strive to be precise and reliable when writing the document, and the content may be modified or changed at any time without notice.

Copyright

The copyright of this document belongs to Xixun Technology. Without the written permission of our company, no unit or individual may copy or extract the content of this article in any form.

Trademark



is a registered trademark of Xixun Technology.

Update Record

No.	Version	Details	Date
1	Ver.1.0	Initial	2020.09.27
2	Ver.1.1	Update content	2024.08.29

Catalogue

Overview	1
Functional Features	3
Interfaces	5
Technical Parameters	7
Hardware Connection Diagram	10
Ledset2.3 Configuration	11
LEDOK Upload /Publish Program	16
Network Configuration	21
Wired Ethernet Configuration	21
WiFi Configuration	22
4G Setup	23
AIPS Cloud Platform Register	25
Register For AIPS Platform	25
AIPS Cloud Programing	27
Simple Program	27
Advanced Program	29
Send Program	35

SHENZHEN SYOLUTION TECHNOLOGY CO., LTD

Overview

Thank you for choosing our LED control card, and we sincerely hope that you will enjoy your experience with the excellent performance of this product. The LED control card is designed to be consistent with international and industry standards, but can still have potential for personal injury and property damage if not operated properly. In order to avoid possible dangers posed by the card and to benefit as much as possible from your card, please follow the relevant instructions for use in this manual when installing and operating the product.

Sysolution Y08 is an outdoor small space screen dedicated control card, performance configuration series using industrial-grade quad-core processor, running frequency 1.5GHz, memory support 1GB + 8GB (compatible with 2GB + 16GB need to be customized) LPDDR3, industrial-grade relative to commercial-grade CPU performance is generally low, but the limit of the temperature difference can be reached -40°C to 85°C , the configuration of the performance can be satisfied with the picture. The performance of this configuration can support the smooth playback of pictures, 1080P video with 2 hard decoders at the same time, flash animation, text and other content.

It can be widely used in vehicle screens, small traffic screens, community screens, light pole screens and other small belt-carrying scenarios.

Product Features:

1. Stable and reliable performance. Support -40 °C to high temperature 85 °C temperature range operation, 5V-12V wide voltage, 7 * 24 hours without losing power, ≤ 0.3% failure rate
2. With eight hub75 ports, supports up to 16 groups of RGB parallel data, no need a receiver card , connect directly to the screen;
3. Supports network access through network cable, Wi-Fi or 4G. Can be controlled by cell phone, like a router for wireless network configuration;
4. The chip can support GSM, WCDMA, TD-SCDMA, EVDO, TDD-LTE, FDD-LTE and other standards.
5. Support connecting to the cloud platform to publish programs, easily realize the display of off-site cluster control;
6. The hardware design takes full consideration of the user's on-site deployment, operation and maintenance scenarios, with a simple structure that saves space for the user, reduces wiring, and makes installation easier;
7. The software and platform are designed for stable operation and efficient maintenance.
8. Painted with UV three-proof adhesive, national standard double 85 protection level, dust-proof, moisture-proof, anti-static, and anti-smoke.

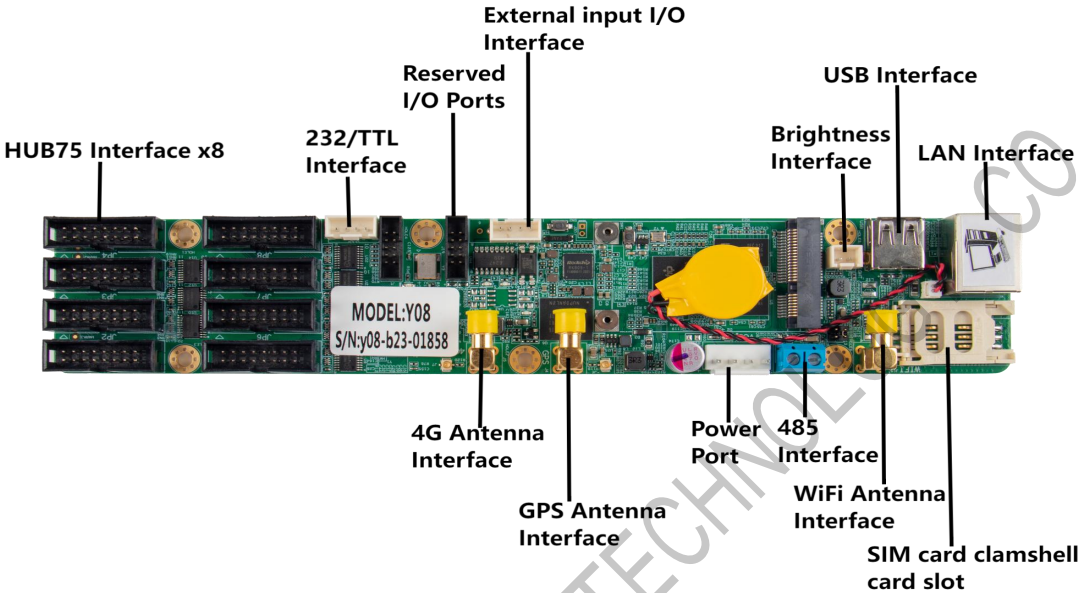
Functional Features

1. Eight-port hub75 output direct output to ensure stability of picture transmission.
2. On-board RS485 interface , it is convenient for front-end equipment to control the brightness adjustment, playback screen control, power on/off and other commands for the rear display, and the external eight-element environmental sensor R68, displaying environmental information, without secondary development;
3. Support external GPS positioning and timekeeping modules to ensure synchronization of multi-screen picture playback;
4. Support optional 4G module, the module model varies from country to country, please tell us the country or area before ordering ;
5. Support secondary development, support cloud platform remote cluster control, such as centralized release of the program, set the schedule on/off, volume, brightness and so on;
6. Support local web page, support PC, cell phone, Pad and other user terminals program release and display control.
7. Powerful processing performance with 4-core processor, frequency 1.5GHz, support for 1080P video hard decoding, 1GB of operating memory, 8GB of internal storage space, the user can use 4GB;
8. The user terminal connects to the WiFi hotspot that comes with the Y08, the default SSID number is "SN number" and the default password is "12345678";
9. Support GPS timing/time alignment, Support NTP accurate automatic time calibration;

10. Automatic adjustment of the display brightness, which requires a necessary brightness sensor;
11. Support broadcasting programme by way of programme lists.
12. Support USB camera.
13. Expandable amplifier module R16 (optional), direct two 30W speakers for audio playback;
14. Supporting software: AIPS 4.0 cloud publishing platform, PC-based software LedOK Express, mobile app: LedOK lite.

SHENZHEN SYSOLUTION TECHNOLOGY CO., LTD

Interfaces



Type		Description
Input interface	Power connector	+12V power supply
	LAN port	Gigabit network input
	USB port	USB2.0 interface, support for U disk programme import and playback, Debug interface
	Brightness line interface	Optional RL2 brightness sensor
	External testing	sos, eme, busy, spa, acc
Output Connector	485 interface	Baud rate 9600
	TTL/232 interface	Baud rate 9600 (two choices default TTL)
	GPS interface	GNSS GPS/Beidou/Glonass
	WIFI interface	IEEE 802.11b/g/n 2.4G
	4G interface	4G module interface

	Audio output connector	Stereo audio output External operation indicator, external reset (optional and to be specified on order)
	HUB75 interface	8 x HUB75 signal outputs
Power indicator	Red light always on	Normal
FPGA Indicator	Red slow flash	Normal operation
CPU indicator	Red slow flash	Normal operation

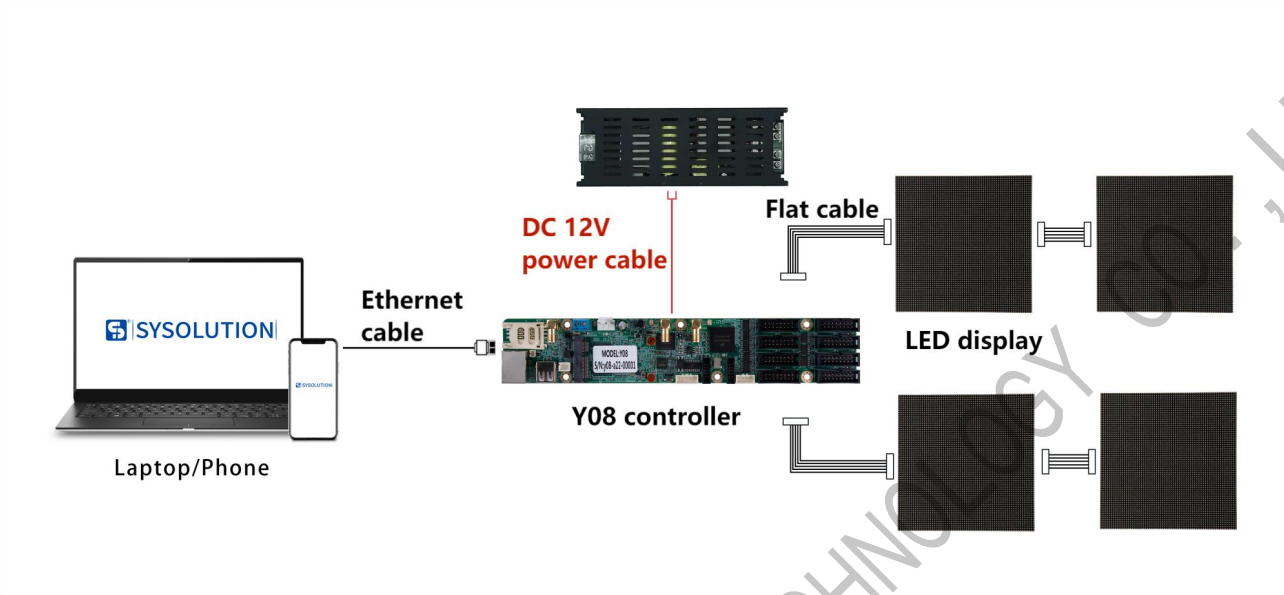
Technical Parameters

Product features	Description	
Model	Main: Y08 (no 4G), Y08-CH (China 4G full network access), Y08-G (global access, recommended abroad)	
Pixel	Y08: 170,000 dots, limiting resolution 1024(W)or 1024(H), custom resolution	
Communication	Network port, WiFi, USB stick, optional 4G module	
CPU	Cortex-A35 quad-core at 1.5GH	
GPU	Mali-G31MP2 OpenGL ES3.2, Vulkan 1.0, OpenCL 2.0 Dvalin-2EE	
System memory	8GB Emmc+1GB LPDDR3	
Operating systems	Android 9	
WiFi	IEEE 802.11b/g/n 2.4G	
GPS	GNSS GPS/Beidou/Glonass	
Other interface support	1 stereo audio output. (Requires extension of an adapter card, optional) 2. 1 x USB 2.0 interface. 3. Support for importing and playing programmes from a USB stick. 4. 1 x RS485 interface, 1 x RS232, 1 x TTL serial port. Connection of brightness sensors, other sensors, and connection of other modules for corresponding functions.	
Configurat ion	LedOK Express	
Supported Bands		
Model	3G/4G bands (optional)	Certification

<p>Y08-CH</p>	<p>-China (China/India)</p> <p>FDD-LTE: B1/3/5/8</p> <p>TDD-LTE: B38/39/40/41</p> <p>TDSCDMA: B34/39</p> <p>WCDMA: B1/8</p> <p>CDMA 1X/EVDO: BC0</p> <p>GSM: B3/5/8</p>	<p>Mandatory certification: SRRC/ NAL/ CCC</p> <p>Other: WHQL</p>
<p>Y08-NA</p>	<p>-North America (North America)</p> <p>FDD-LTE : B2/4/5/7/12/13/17</p> <p>WCDMA: B2/4/5</p>	<p>Carrier certification: AT&T/ T-Mobile/Rogers/ TelusVerizon/AT&T (FirstNet)/T-Mobile/U.S. Cellular/Rogers/ Telus</p> <p>Mandatory/conformance certification: : FCC/ IC/ PTCRB</p> <p>Other: WHQL</p>
<p>Y08-EU</p>	<p>-Eurasia (EMEA/Korea/Thailand/ India and other Asian countries)</p> <p>FDD-LTE: B1/3/5/7/8/20</p> <p>TDD-LTE: B38/40/41</p> <p>WCDMA: B1/5/8</p> <p>GSM: B3/5/8</p>	<p>Carrier certification: Vodafone/Deutsche Telekom/SKT/ Telefónica</p> <p>Mandatory/conformance certification : GCF/ CE/ KC/ NCC/RCM/ FAC/ NBTC/ICASA</p> <p>Other: WHQL</p>

<p>Y08-LA</p>	<p>-Latin America (Latin America /Australia / New Zealand)</p> <p>FDD-LTE: B1/3/5/7/8/28</p> <p>TDD-LTE: B40</p> <p>WCDMA: B1/2/5/8</p> <p>GSM: B2/3/5/8</p>	<p>Mandatory/conformance certification : GCF/ FCC/ Anatel/ NCC/RCM</p> <p>Other: WHQL</p>
<p>Y08-G</p>	<p>-Global (Global)</p> <p>FDD-LTE:</p> <p>B1/2/3/4/5/7/8/12/13/ 18/19/20/25/26/28</p> <p>TDD-LTE: B38/39/40/41</p> <p>WCDMA : B1/2/4/5/8/6/19</p> <p>GSM: Quad-band</p>	<p>Carrier certification: Deutsche Telekom/ Verizon/ AT&T/ Sprint/U.S. Cellular/ Telus</p> <p>Mandatory/conformance certification: GCF/ CE/ FCC/ PTCRB/ IC/ Anatel/IFETEL/ SRRC/ NAL/ CCC/ KC/ NCC/ JATE/ TELEC/ RCM/ NBTC/ IMDA/ICASA</p> <p>Other: WHQL</p>
<p>Y08-J</p>	<p>-Japan (Japan)</p> <p>FDD-LTE : B1/3/8/18/19/26</p> <p>TDD-LTE: B41</p> <p>WCDMA: B1/6/8/19</p>	<p>Carrier certification: NTT DOCOMO/SoftBank/ KDDI</p> <p>Mandatory/conformance certification : JATE/ TELEC</p> <p>Other: WHQL</p>

Hardware Connection Diagram



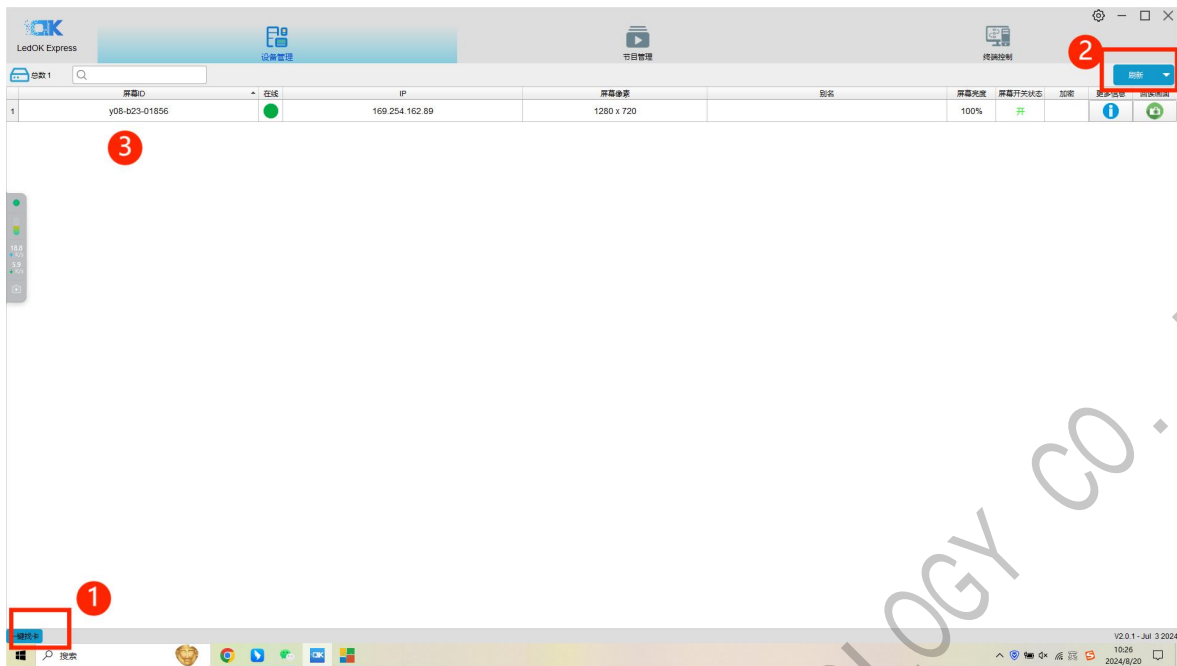
Ledset2.3 Configuration

1. Open Ledset2.3 software, enter Professional configuration mode and start smart settings.



Note: If software can not detect Y08 controller, please turn off windows firewall and exit your anti-virus software. Open Ledok Express software and try to detect Y08 controller IP address.

click the "Detect" button in the left bottom and then click Refresh button on the right top, then normally can detect Y08 controller IP address.



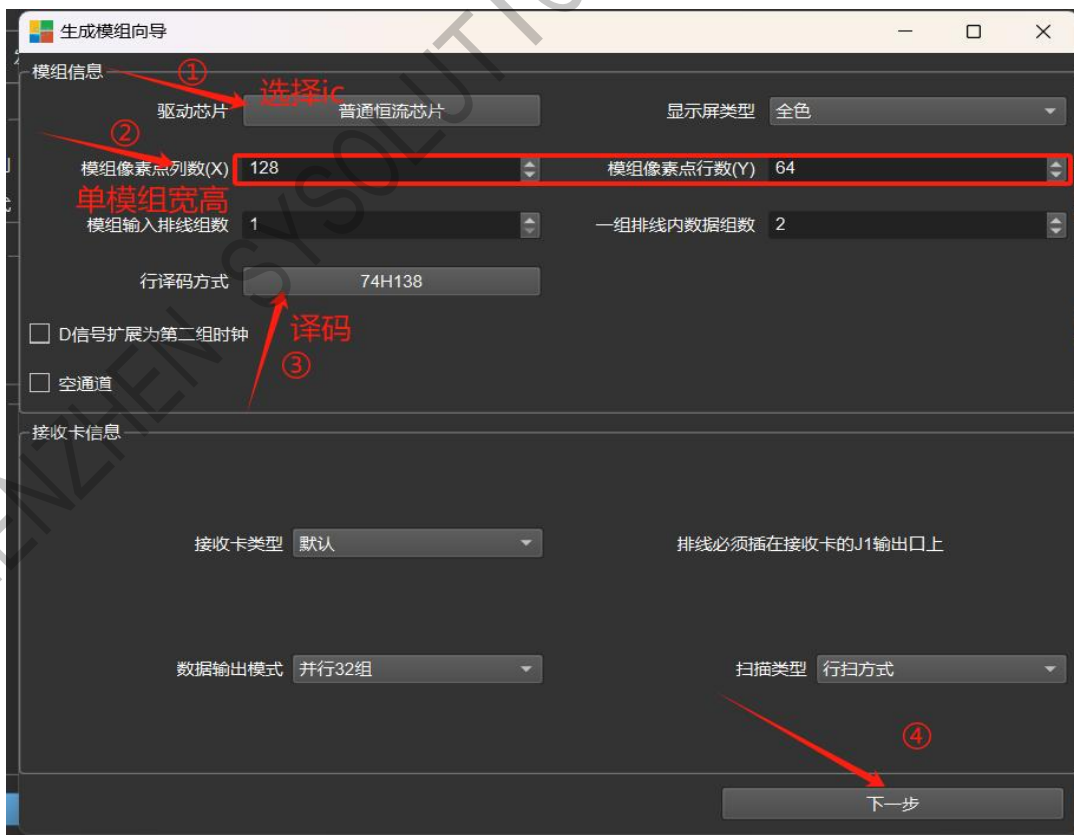
If LEDOK Express can not detect Y08 controller either, please check if Y08 running lights are all normal working status.

if the Y08 working lights all fine but can not detect Y08 controller, please contact our after sales technician for help. (If Ledset2.3 detect Y08 controller correctly then please go on next steps)

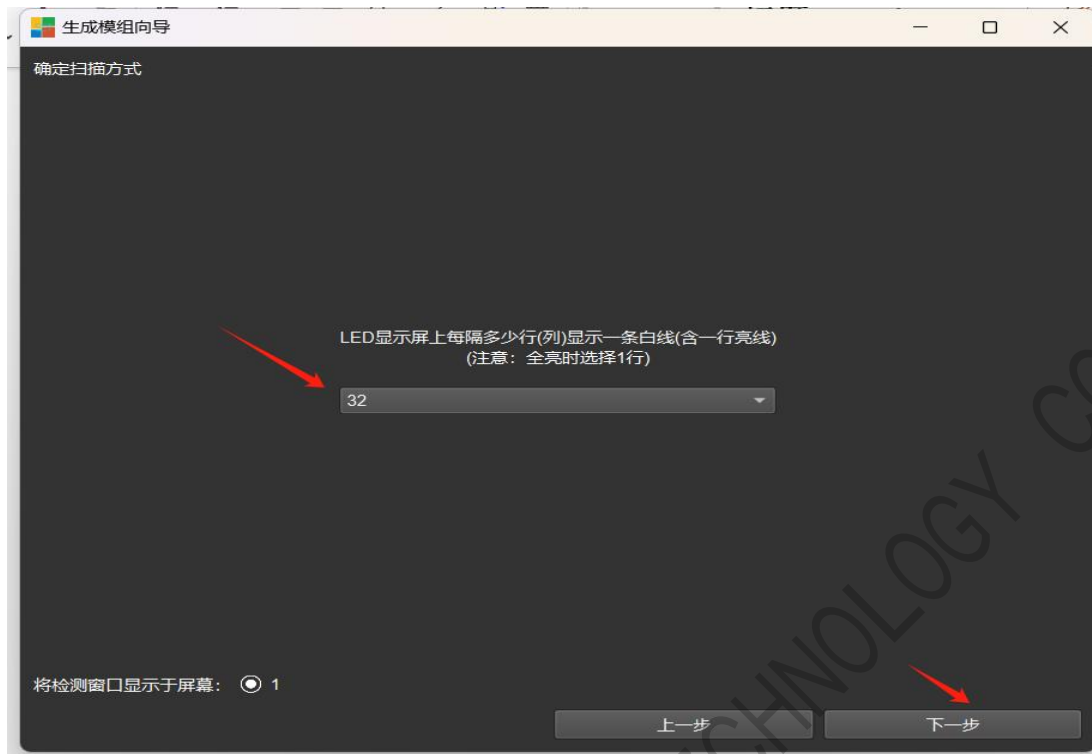
2. Please choose Receiver---- create led module and then start configuring.



3. Choose driver IC and decode type according to the led module, input one led module width and height pixels



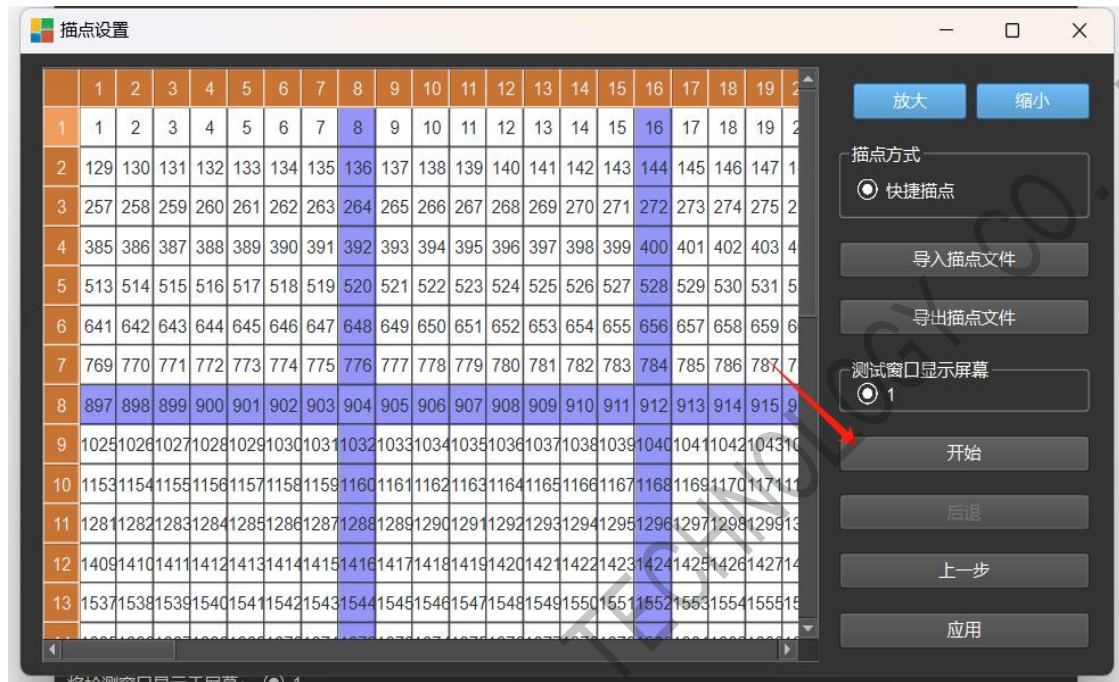
4. Choose scan lines



5. Please watch the colors.

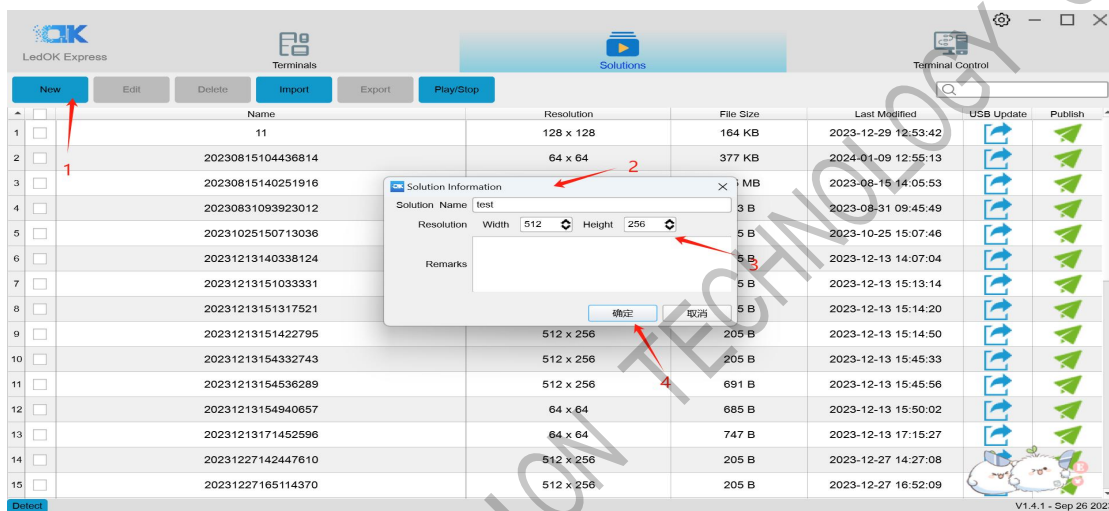


6. Please click in the software one dot by one dot according to the flashing dot in the led module, click apply after finishing (Note: please do not press direction key in the keyboard or maybe the software will have bugs.)

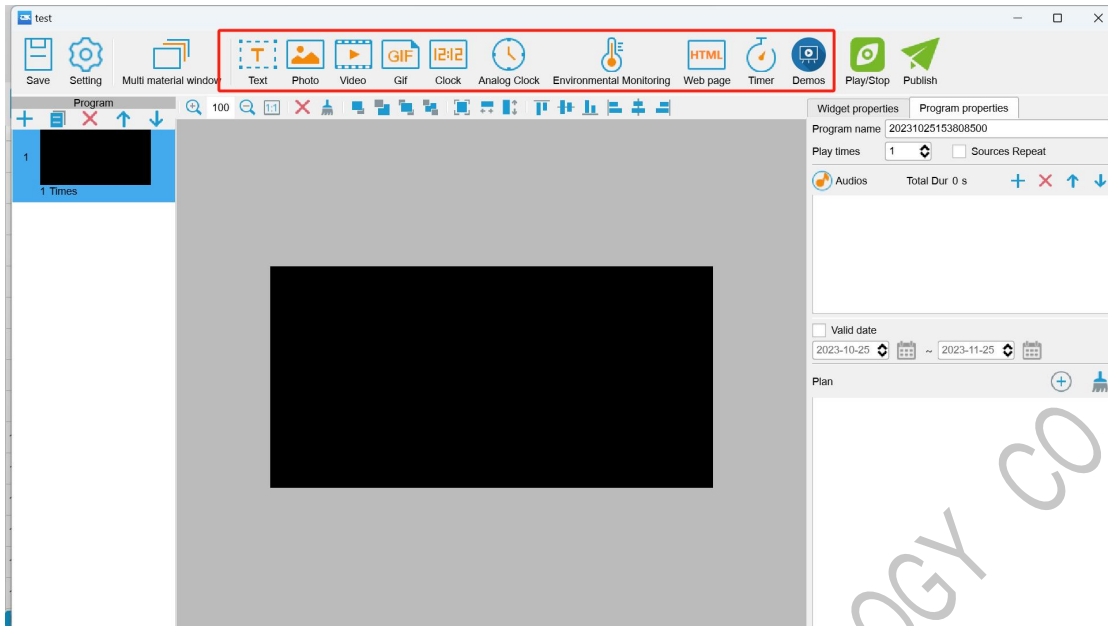


LEDOK Upload /Publish Program

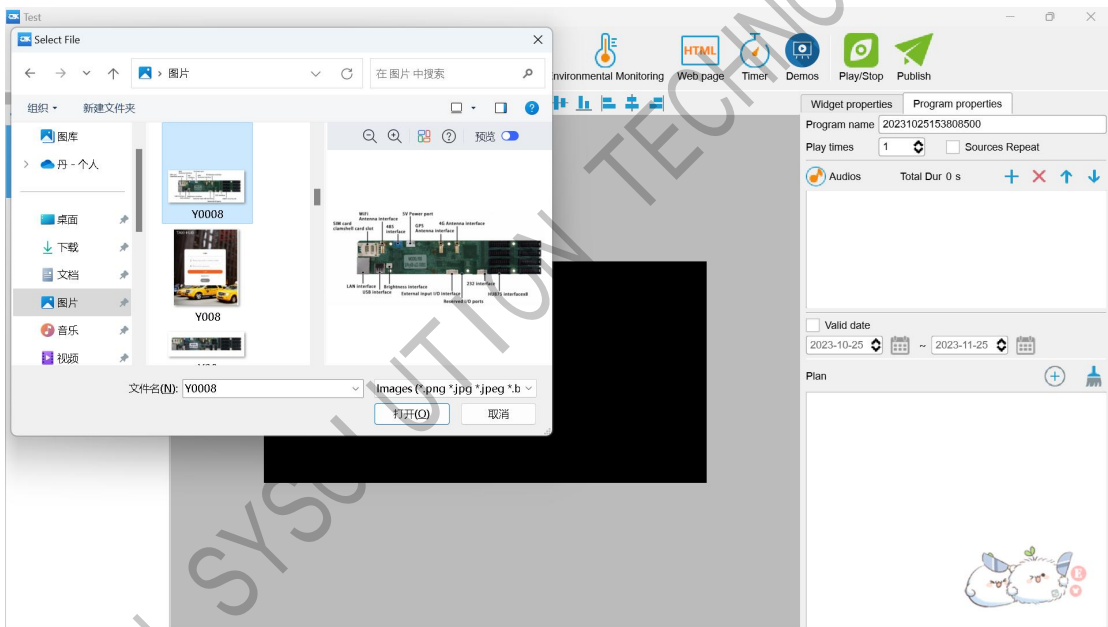
1. Open the program management interface, its name is Solution in software, then click 'New' , input the program name and size information in the dialogue box and enter the editing interface.



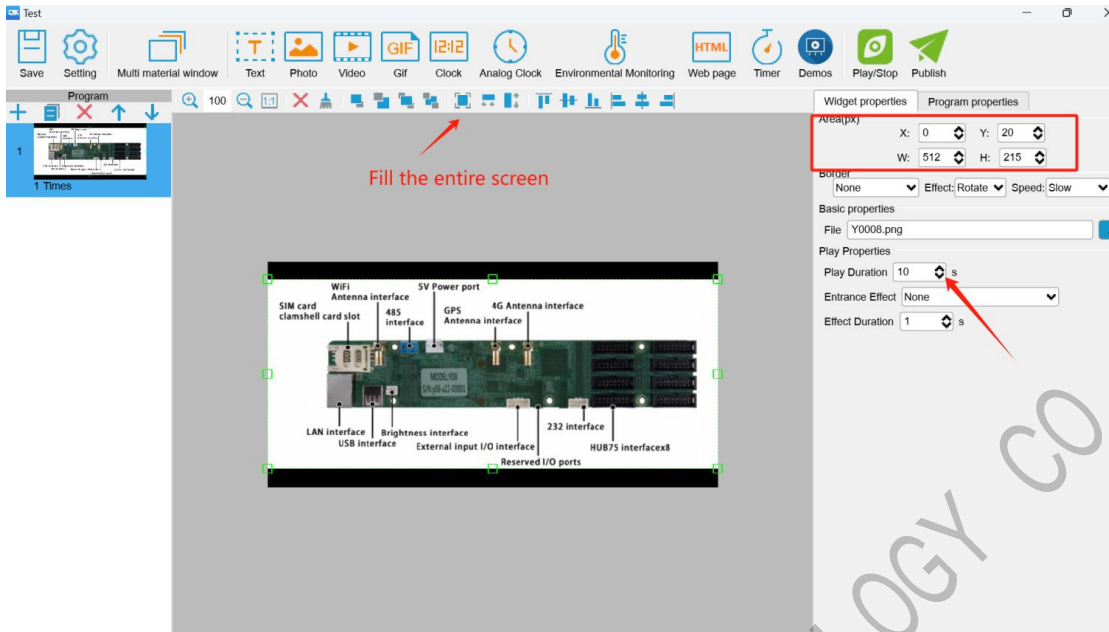
2. As shown in the figure, the top is the type of material that can be added, you can add video, pictures, text, digital clocks, analog clocks, etc., according to the need to choose, this article to pictures and videos as an example.



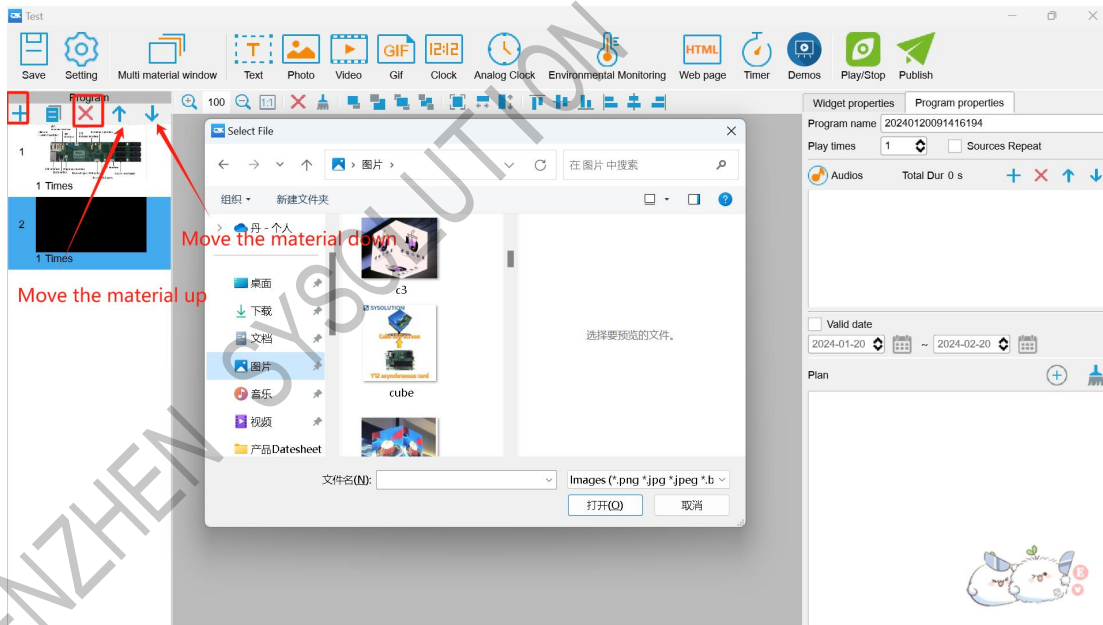
3. Click on the picture and select the picture you want to play.



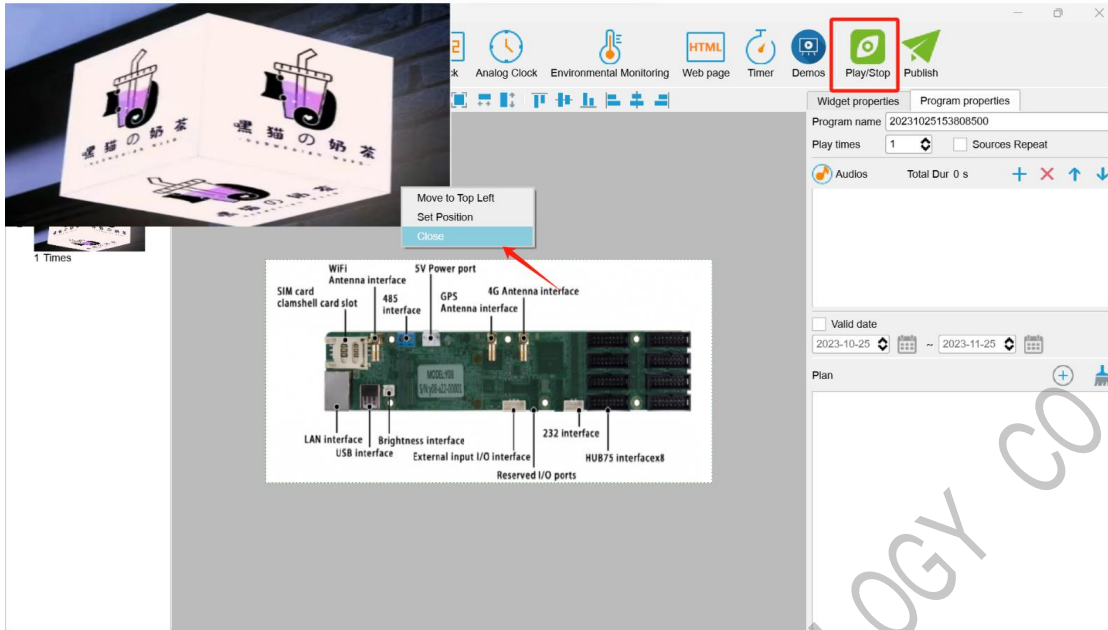
4. After the photo is added, you can click 'full screen' to make the photo spread all over the screen, or you can set the size of the material to make it full screen in the component properties on the right side. The default playback time of the added photo material is 10s, if you need to change the playback time, you can change it in the widget properties.



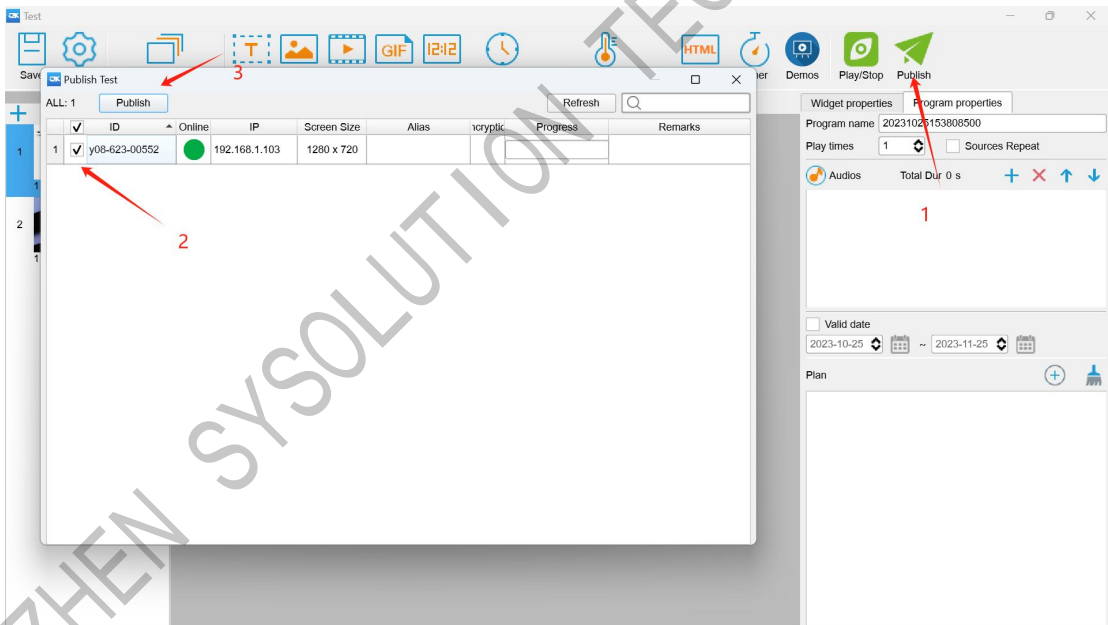
- Click the '+' at the top left to add a second material and the 'X' to delete the material page.

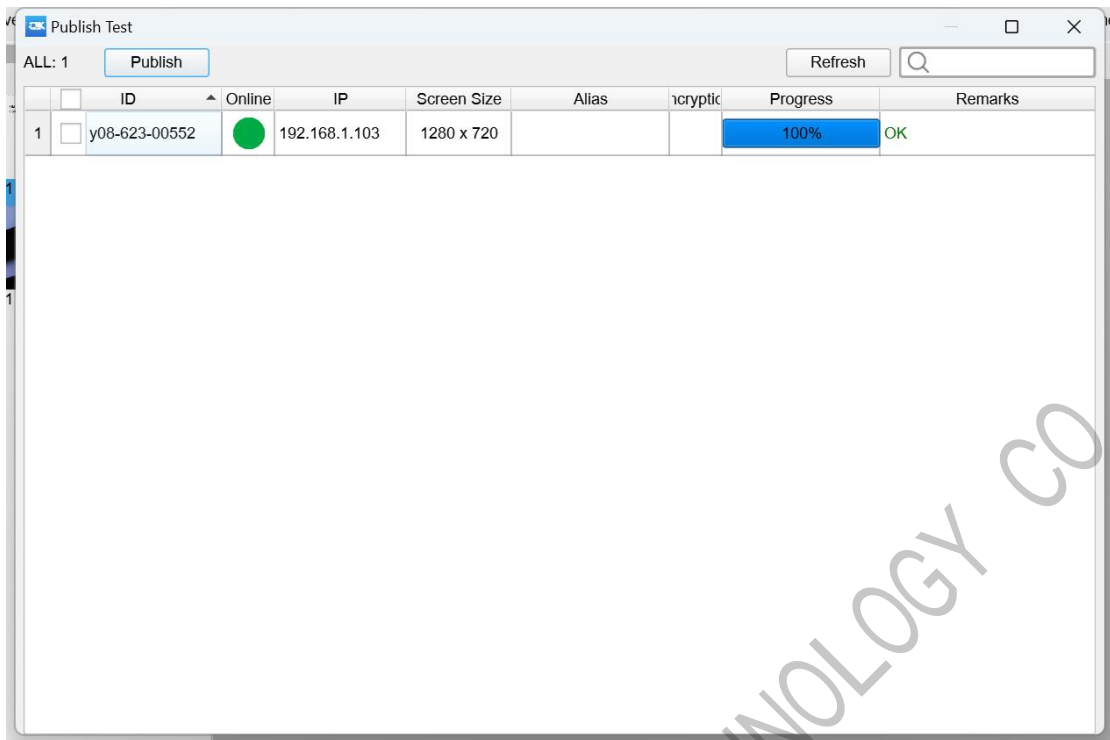


- When the program is finished, you can click 'Play/Stop' on the top to preview the program. You can close the preview by clicking the right mouse button.

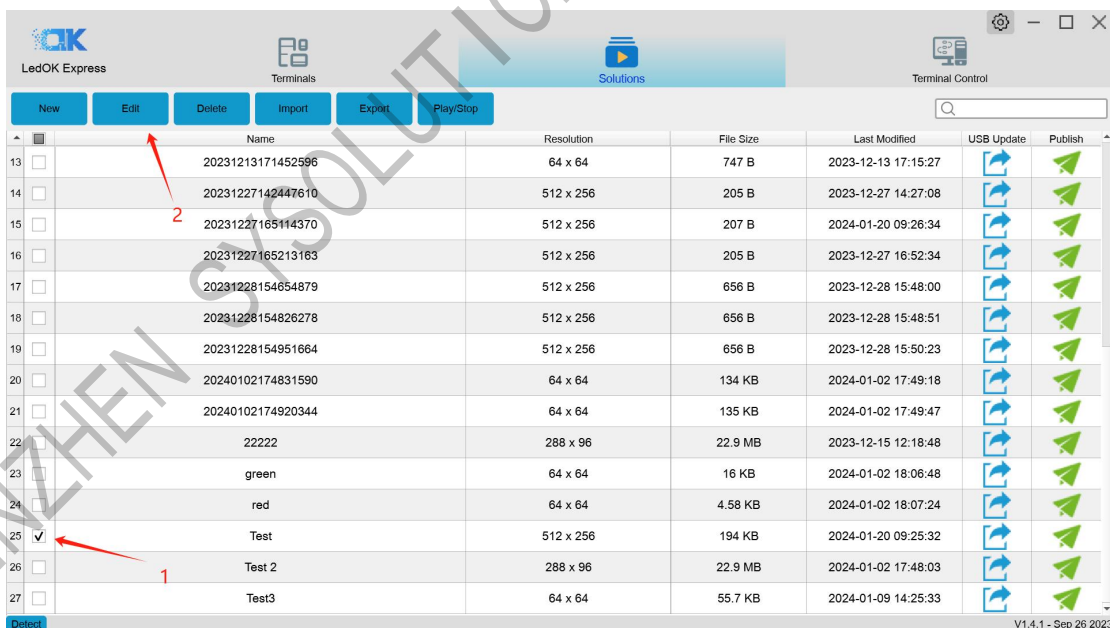


- Click publish button after done all setup, and select the controller id and click send, 100% means send success.





8. The finished program will present in the solution management. At this time, you can check the program and click "Edit" to enter the program page again to modify the program, and then follow the above steps to send the program.

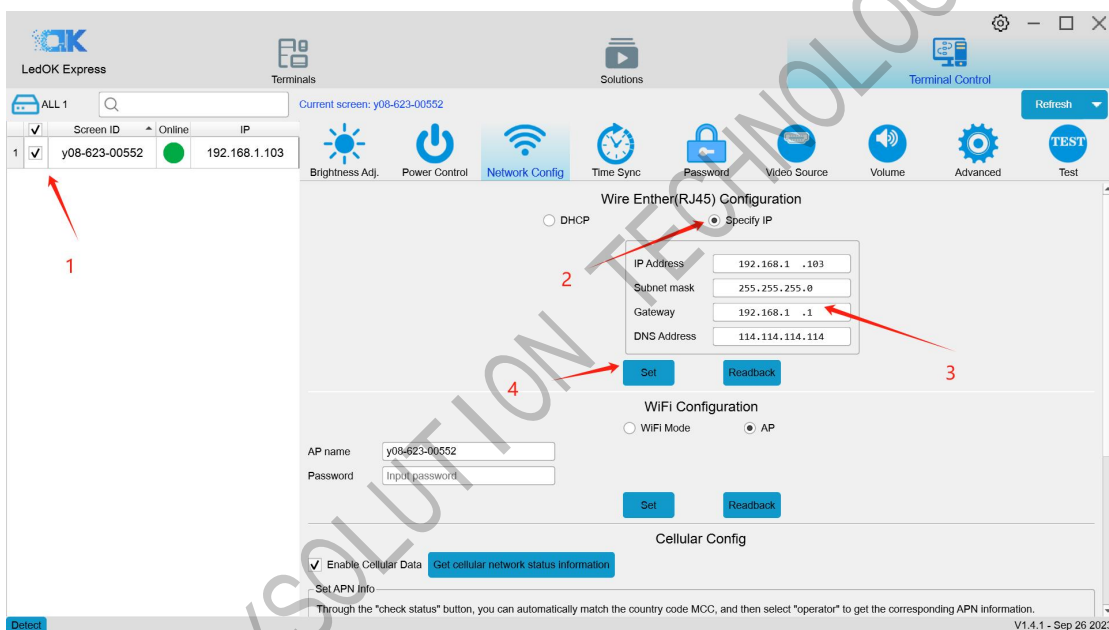


Network Configuration

There are three ways for the controller to access the network, which are Wired Ethernet, WiFi and 4G. Different models of controller according to the application to choose the way to access the network (one of the three options).

Wired Ethernet Configuration

Network configuration, first is Wire, can setup the controller IP address.



NOTES:

1. Controller will get access to internet by wire as first priority.
2. Must remove the LAN cable from controller if choose WIFI or 3G internet and choose automatically acquisition IP.
- 3.

WiFi Configuration

Turn on WIFI and scanning WIFI hotspot, then enter wifi password and click save.

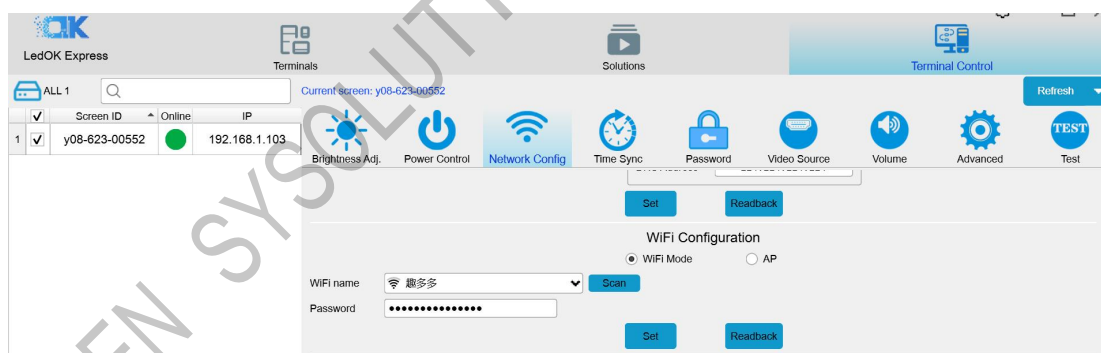
Wait for about 3 minutes, controller will come online. Please watch the "Internet" light, if it flashing regularly means online success, go to AIPS platform and check it.

Check 'WiFi' and wait for about 3 seconds, then click "Scan" to scan for available WiFi.

Select WiFi and enter the password, then click 'Save' to save the WiFi configuration to the controller.

NOTES:

If there is a network cable inserted into the controller at this time, you need to unplug the cable. If there is a WiFi dip switch on the controller, you need to dial the dip switch to the WIFI position, and the controller will automatically connect to the configured WiFi hotspot.



Wait for about 3 minutes, controller will come online. Please watch the "Internet" light, if it flashing regularly means online success, go to AIPS platform (www.ledaips.com) and check it.

NOTES:

1. If could not scanning the WiFi, please try to turn on/turn off Software or WiFi Switch.

2. If controller can't get access to internet through WiFi, please double check the steps below:
 - A. WiFi antenna plug correctly.
 - B. WiFi password is correct or not.
 - C. If the Wireless router being accessed too many terminals?
 - D. E series controller switch on WIFI mode?
 - E. Try another WIFI hot spot.
 - F. Y/M series controller, please make sure the LAN cable removed.

4G Setup

Check 'Enable Cellular Data' and select the country code MMC through the drop-down frame. Select 'carrier name' to get the APN information, and the specific identification of the carrier is shown in Figure 2; if you can't find the carrier, you can manually input the carrier information and APN information.

Click 'Set', after success, wait for about 3 minutes for the controller to automatically unplug the 4G network into the network; observe the 'internet' light of the controller flashing evenly and slowly, that is to say, it has been accessed to the cloud platform.

If the 'internet' light does not flash, check whether the APN is set correctly. If there is no error, you can reboot the controller and wait for it to go online.

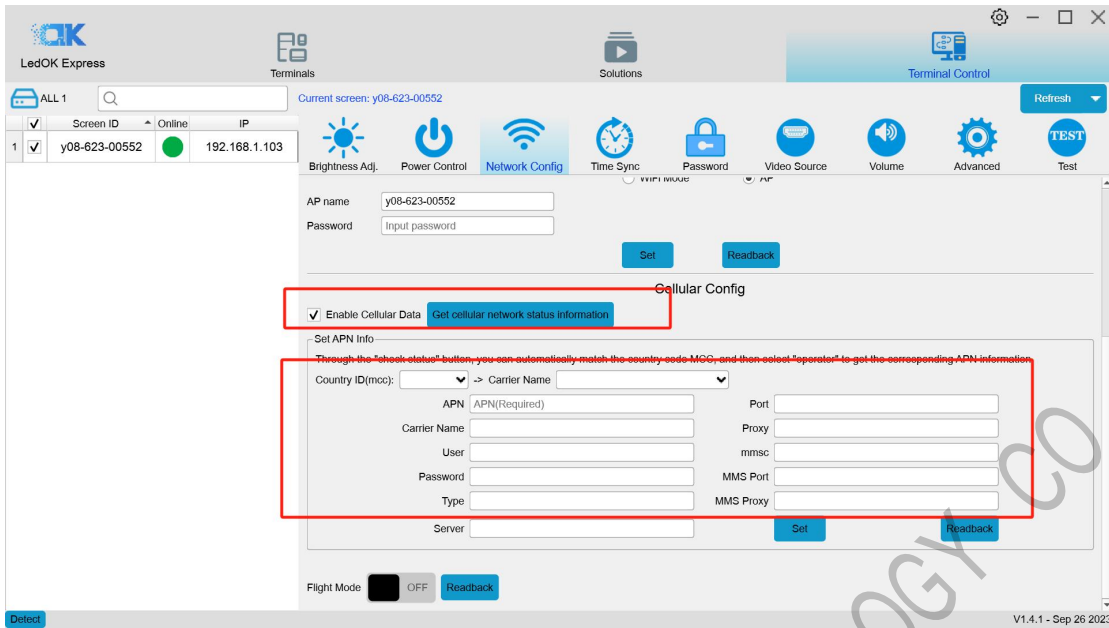


Figure 1



Figure 2

NOTES: If controller can't get online success, please checking following things:

- A. 4G antenna has plugged correctly?
- B. Y/M series controller, make sure the LAN cable removed.
- C. APN is correct or not? (Consult with the carrier" available)
- D. SIM card has activate? SIM card has enough money and 4Gdata service?

AIPS Cloud Platform Register

Register For AIPS Platform

Visit www.ledaips.com and choose Register to starting input related information, click done and verified the link sent by email, finish the register.

USER LOGIN

LANGUAGE

English

ADMIN ACCOUNT

Admin Account

ADMIN PASSWORD

Admin Password

Login

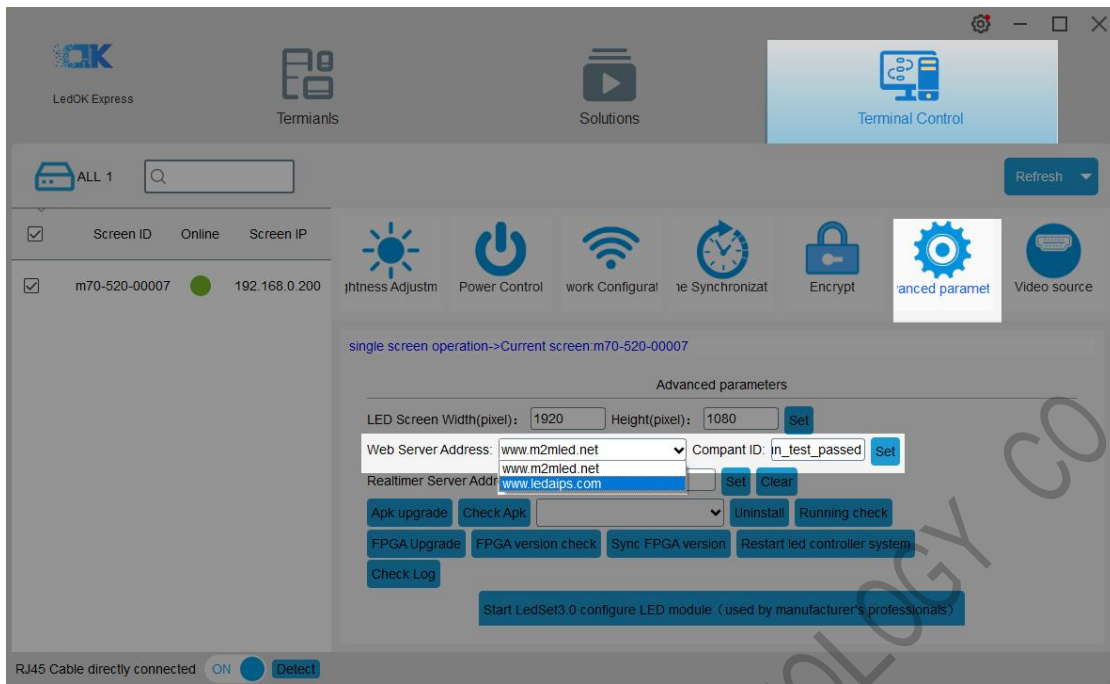
[Reset password](#) [Join](#)

[Download guide video and documents](#)

SYSOLUTION

We currently recommend the use of Google Chrome for the best experience.
[Click here to download](#)

Oversea address: www.ledaips.com



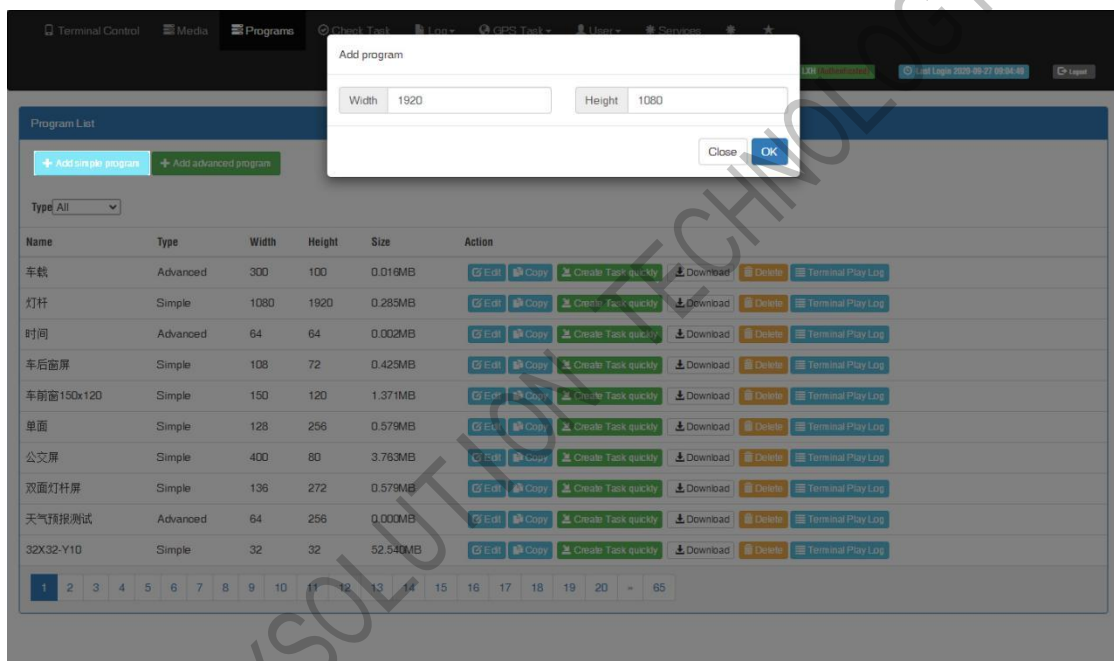
SHENZHEN SYSOLUTION TECHNOLOGY CO., LTD

AIPS Cloud Programming

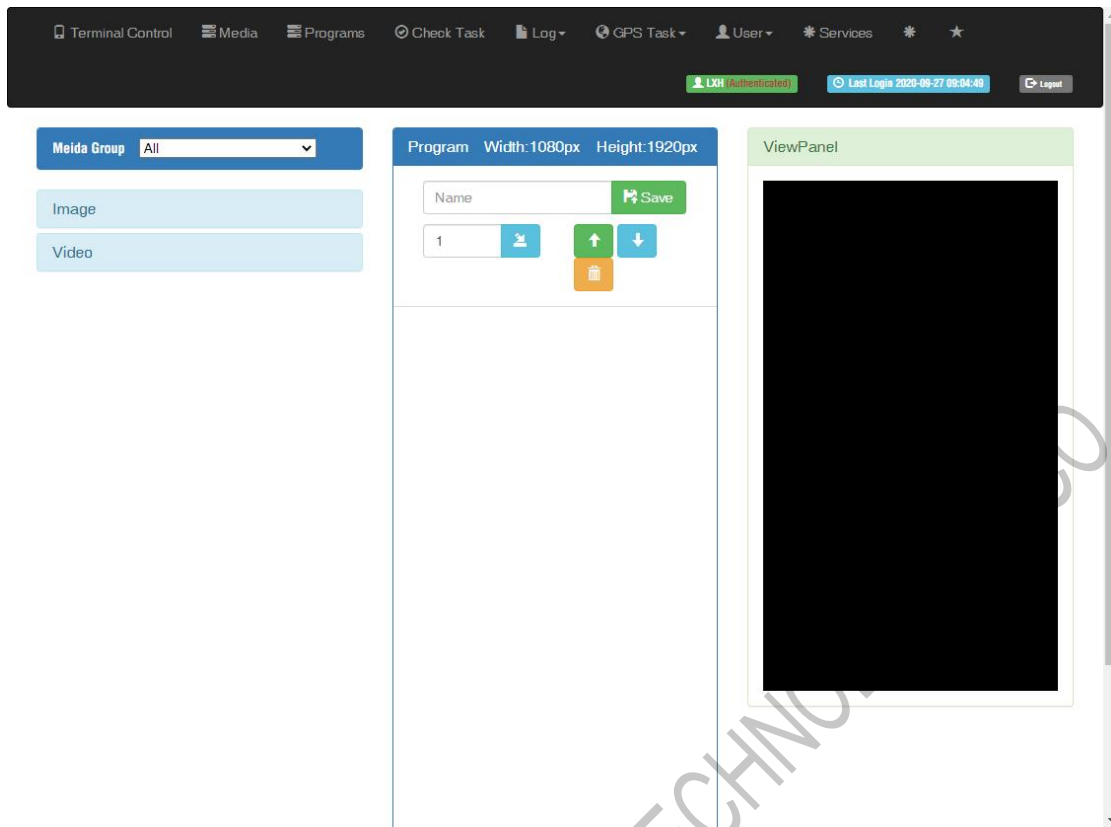
Simple Program

Make simple program ----only support image or video files

1. Click “add simple program” button and set correct screen width and height pixels and click OK.



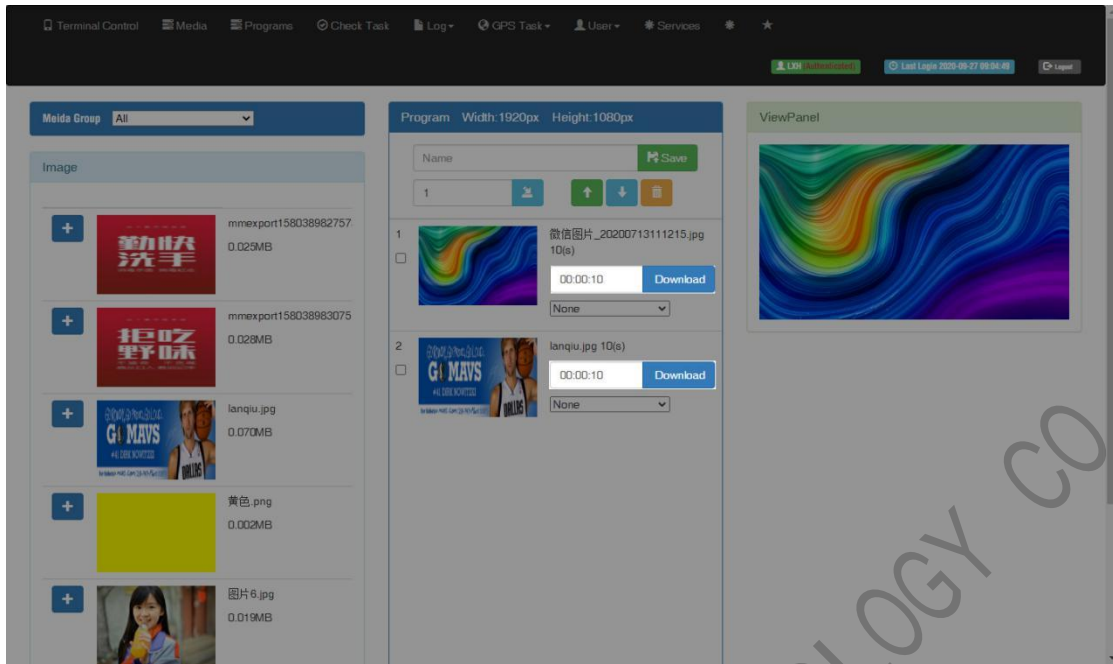
2. Input program name and select the material from left side , here are 3 zones including material in the left side , program editing in the middle and preview window in the right side.



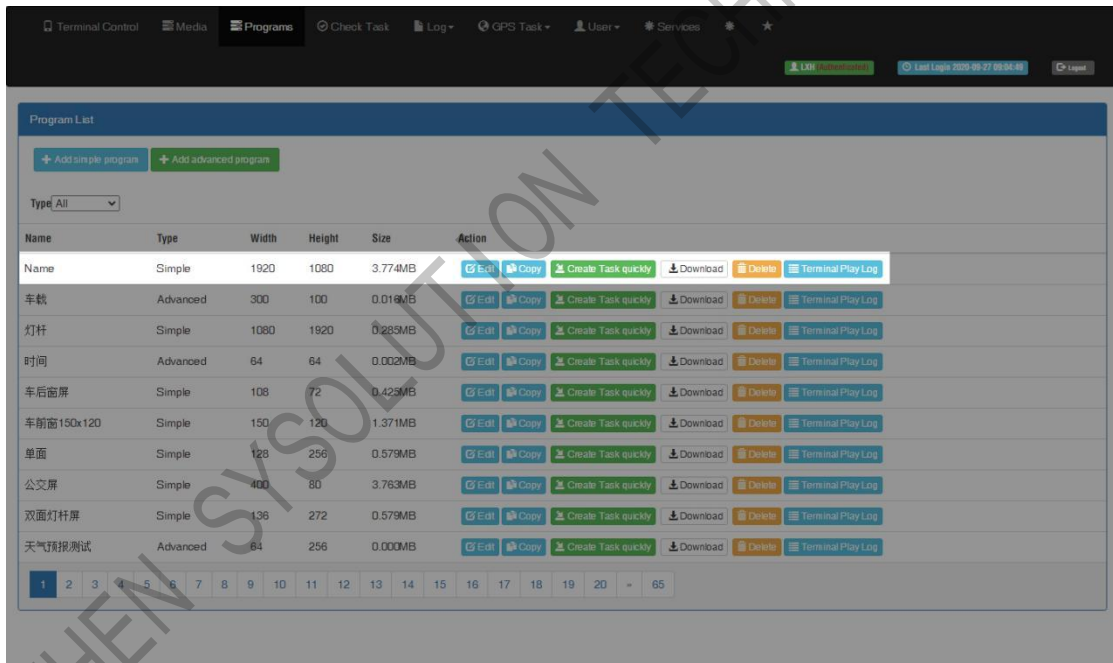
3. Choose materials and set program name, can check preview in the right window.



4. Can set the display duration time here, see screenshot in below:



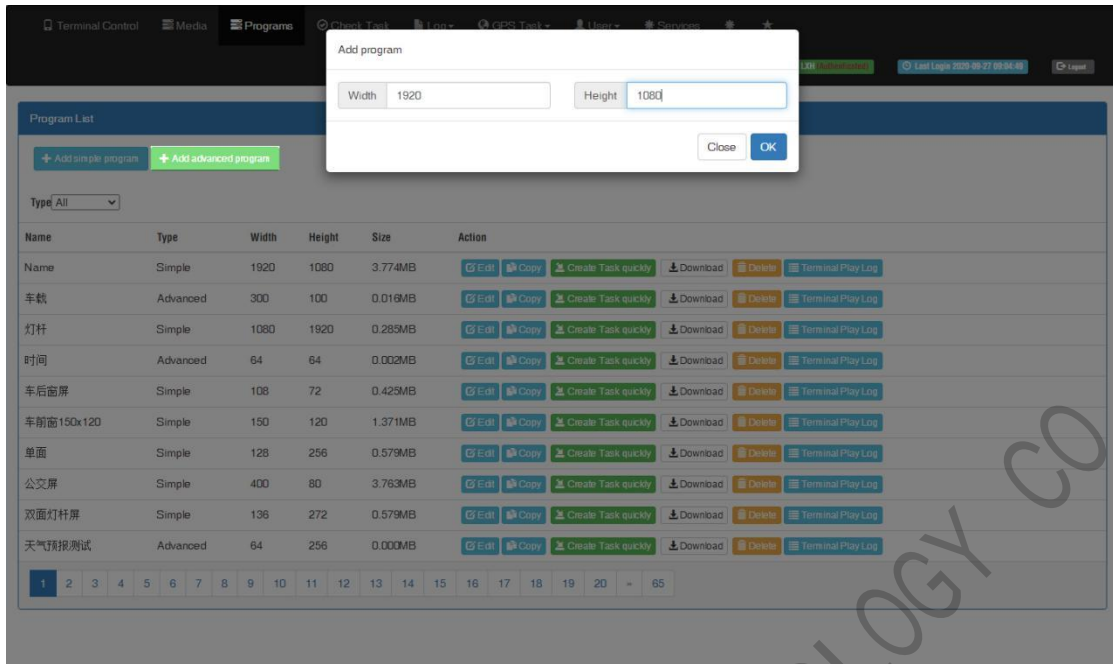
5. Will see program in the list after save.



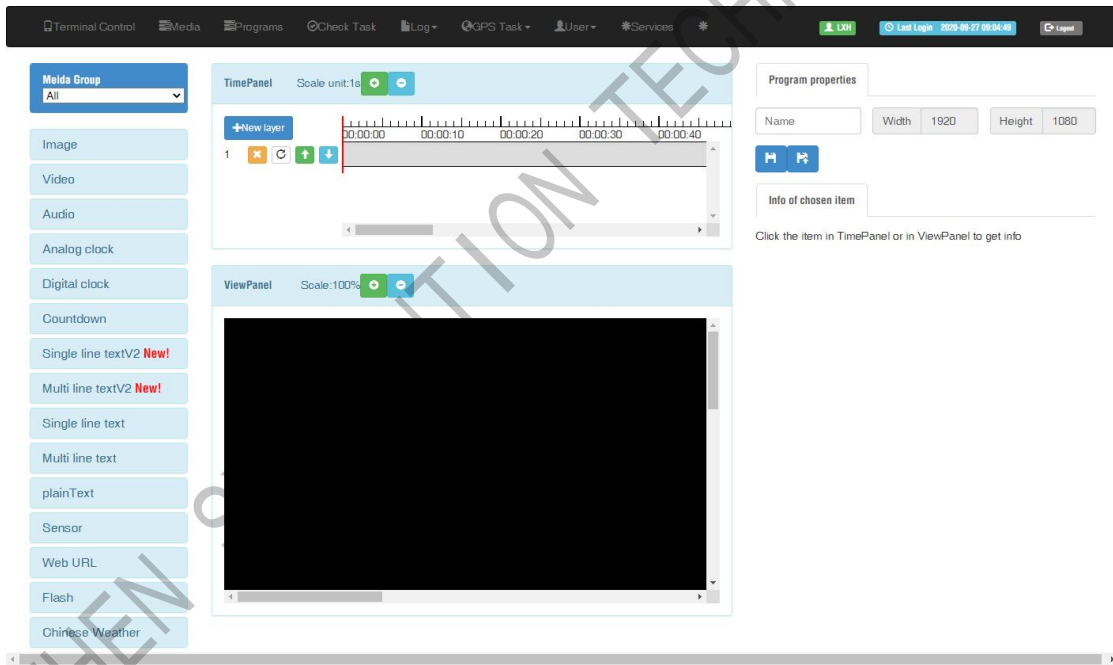
Advanced Program

Advanced program including image, video, clock, text, audio and support more layers.

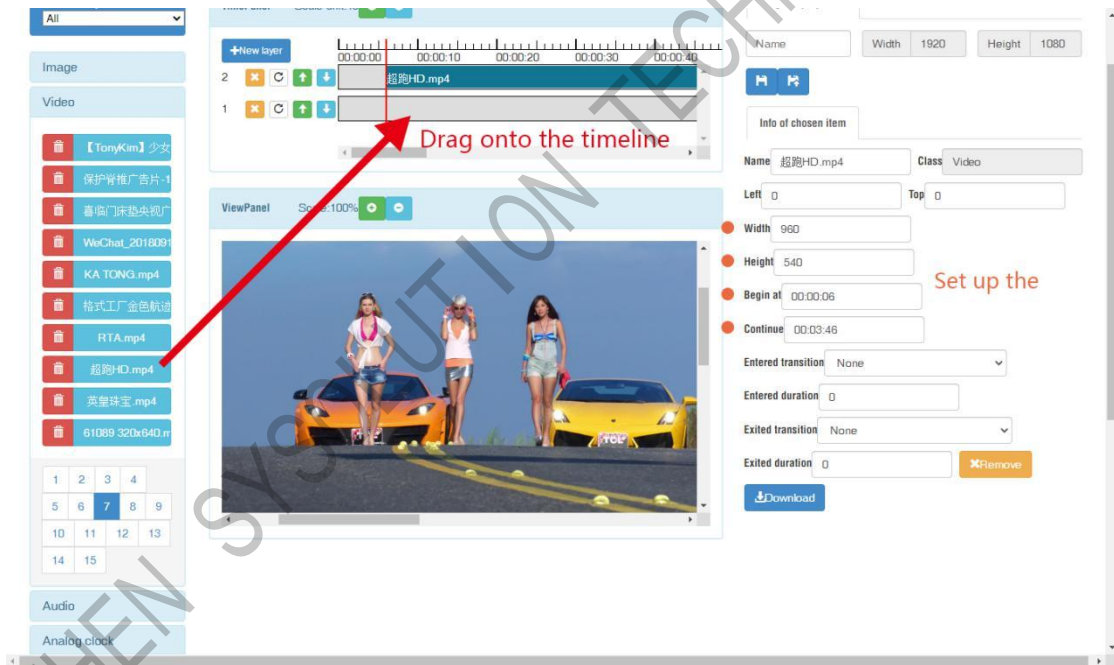
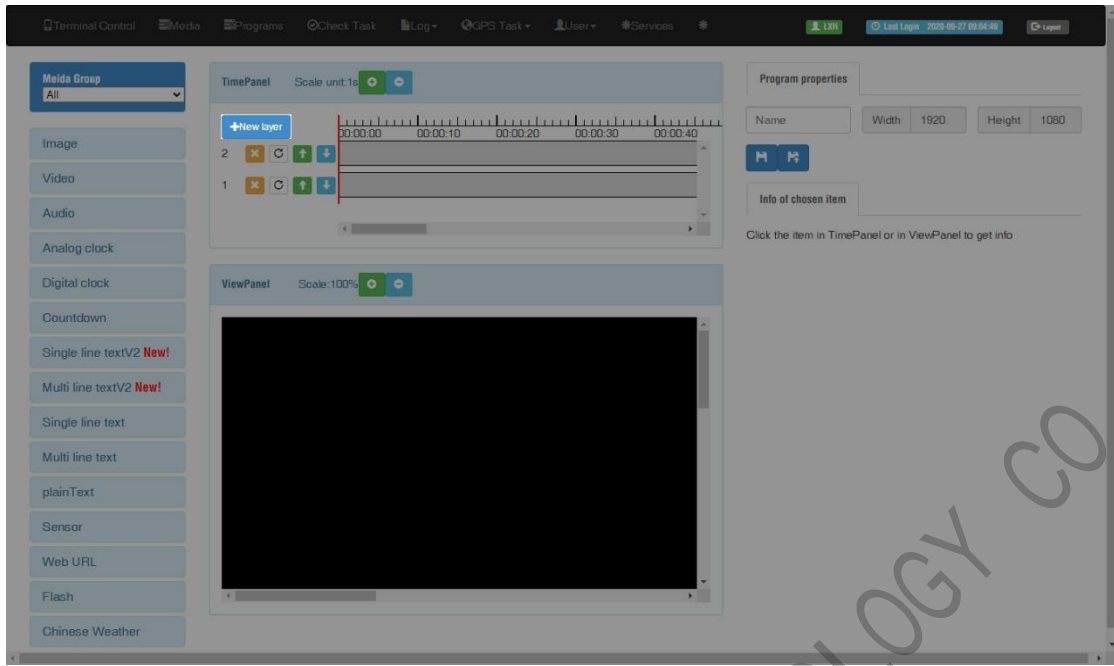
1. Click "add advanced program" button and set correct screen width and height pixels, click ok.



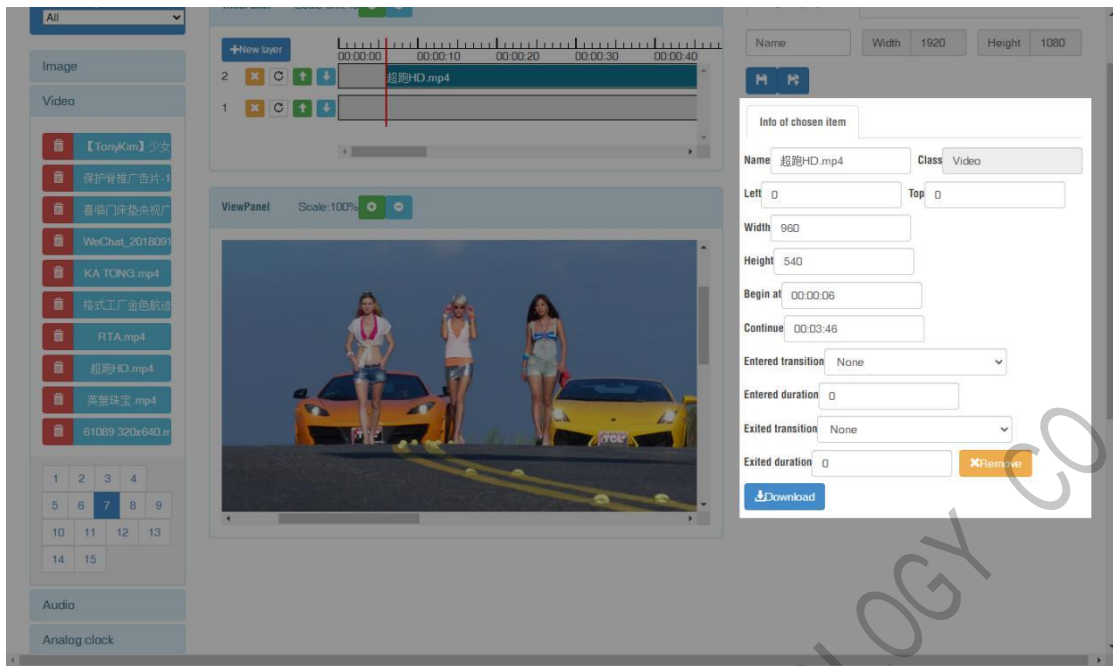
Here are 4 zones including media group, time panel, preview and program property.



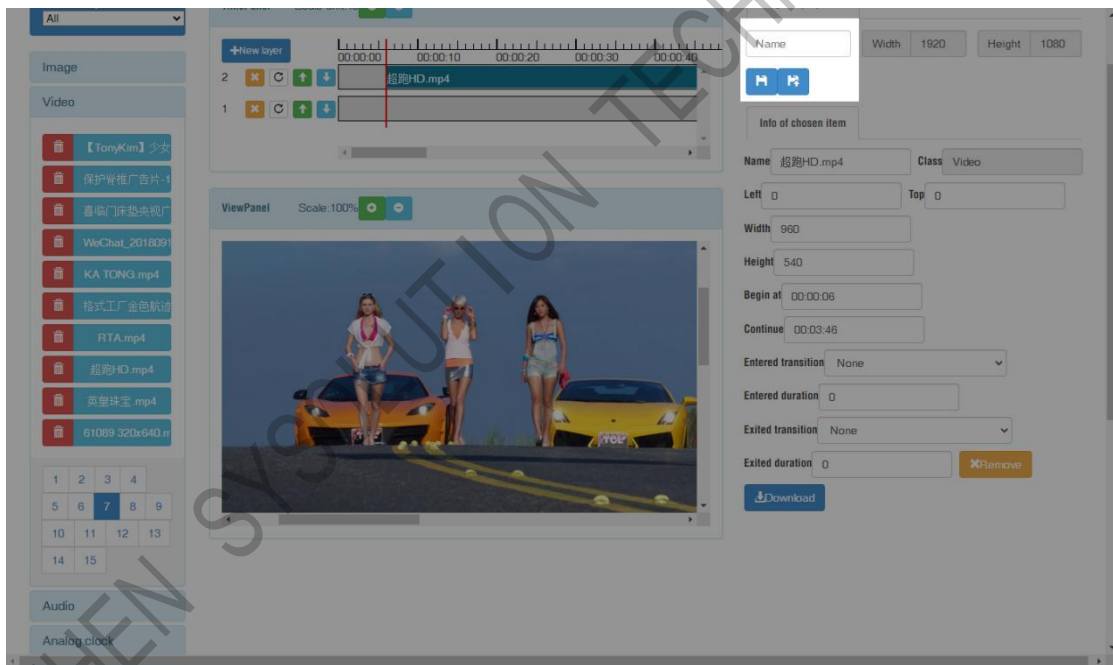
- Click "New layer" button and select media file then add to the time panel, for example: select video file and add to time panel.



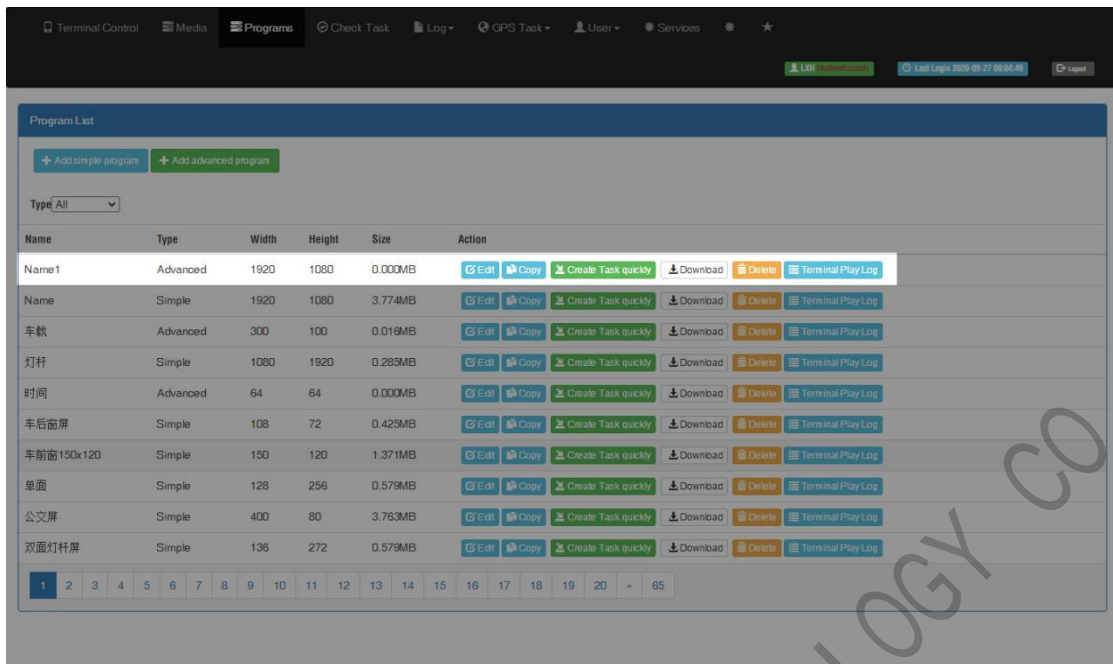
3. Can set the program parameters, start and end time,



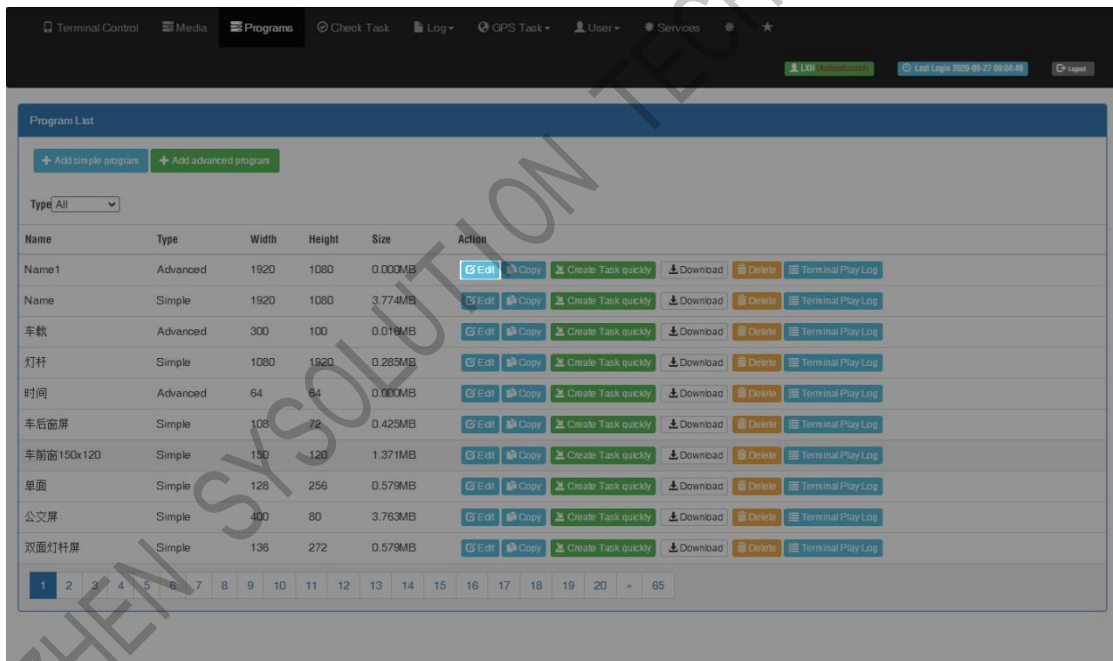
4. Save and quit after setup all parameters and program name.



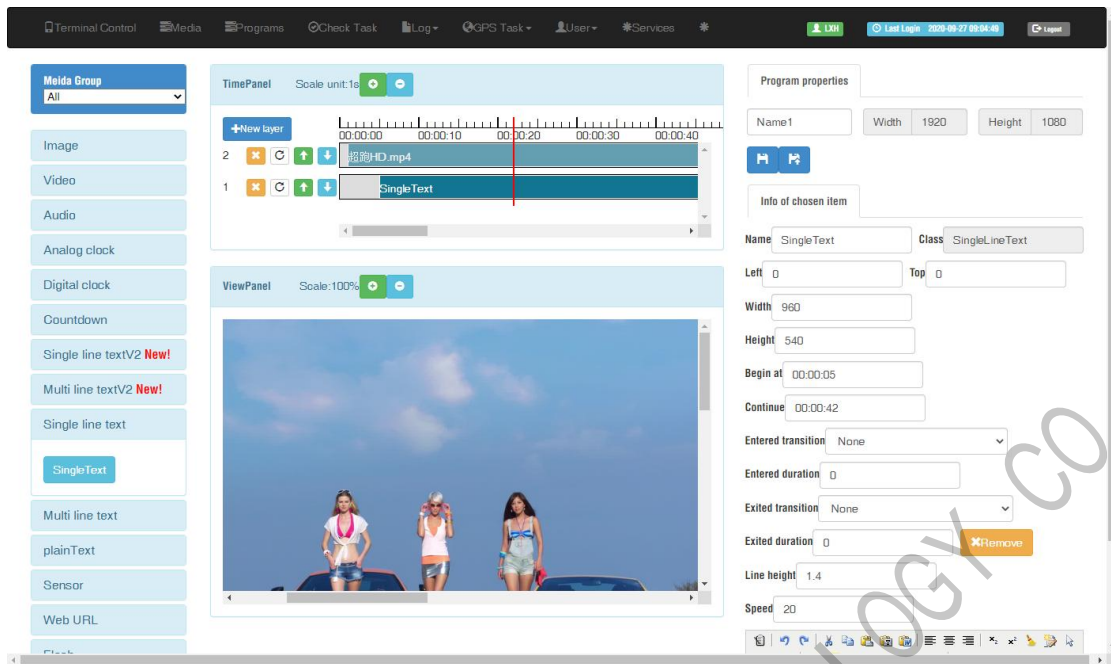
5. Then jump to program list interface , you can click green button of create task quickly and then select controller and send.



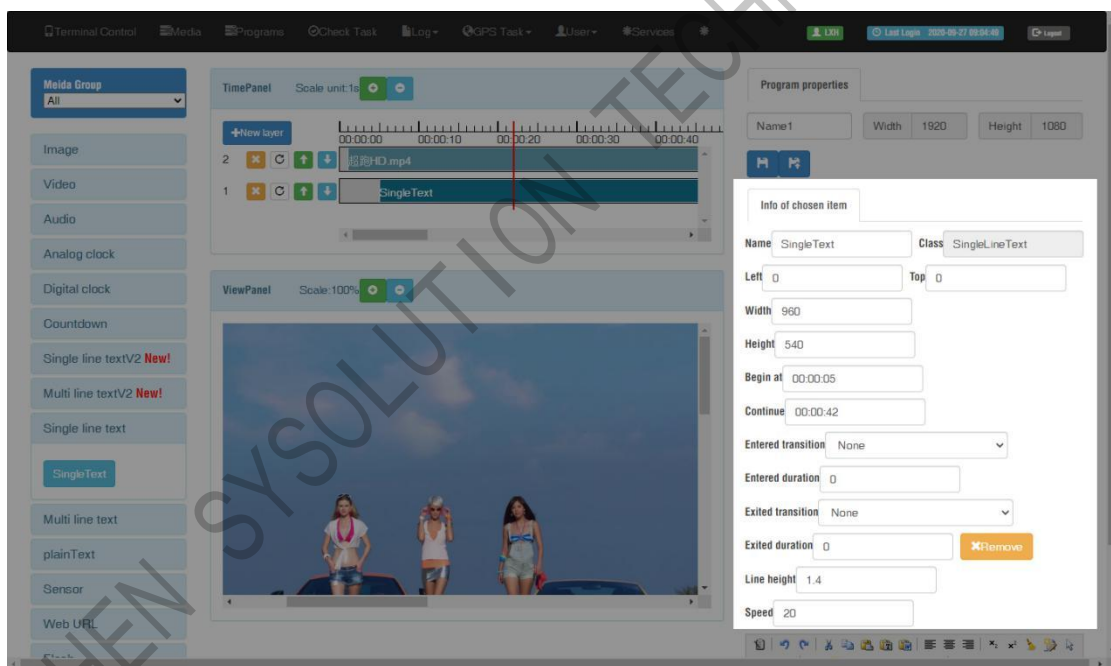
Use the "Edit" button to modify the existing program.



Add multi-line text, click the text (single or multi-text) and add to the time panel



Setup parameters for text, including the start and end time.



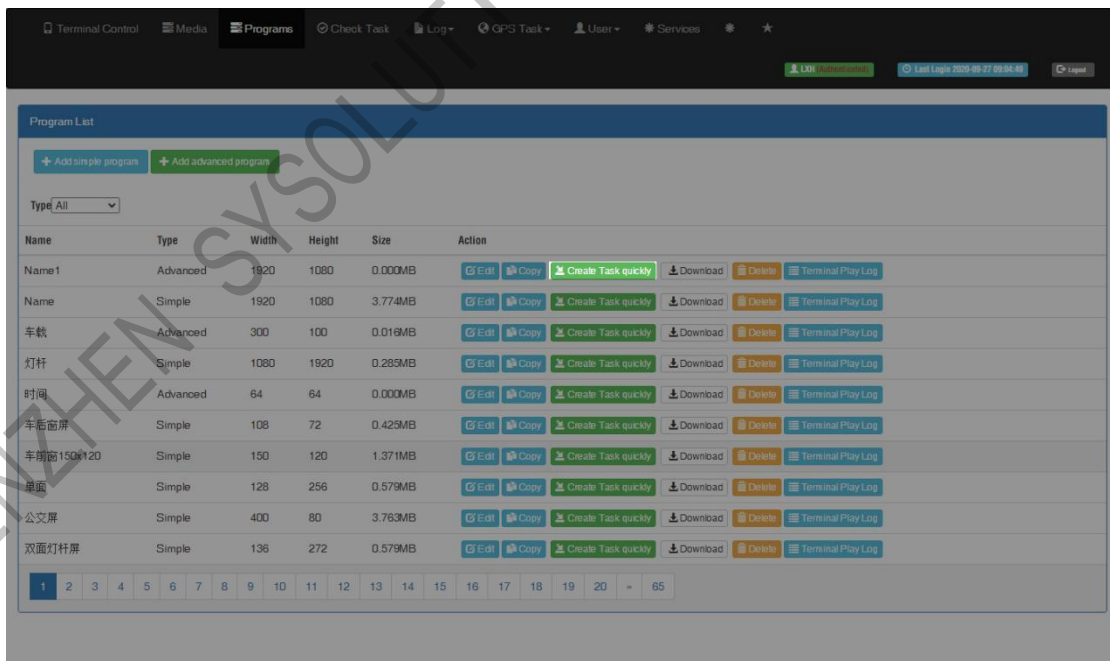
Setup the text color, font size and add more pages, please pay attention to our TIPS message in below, save and quit after finish.



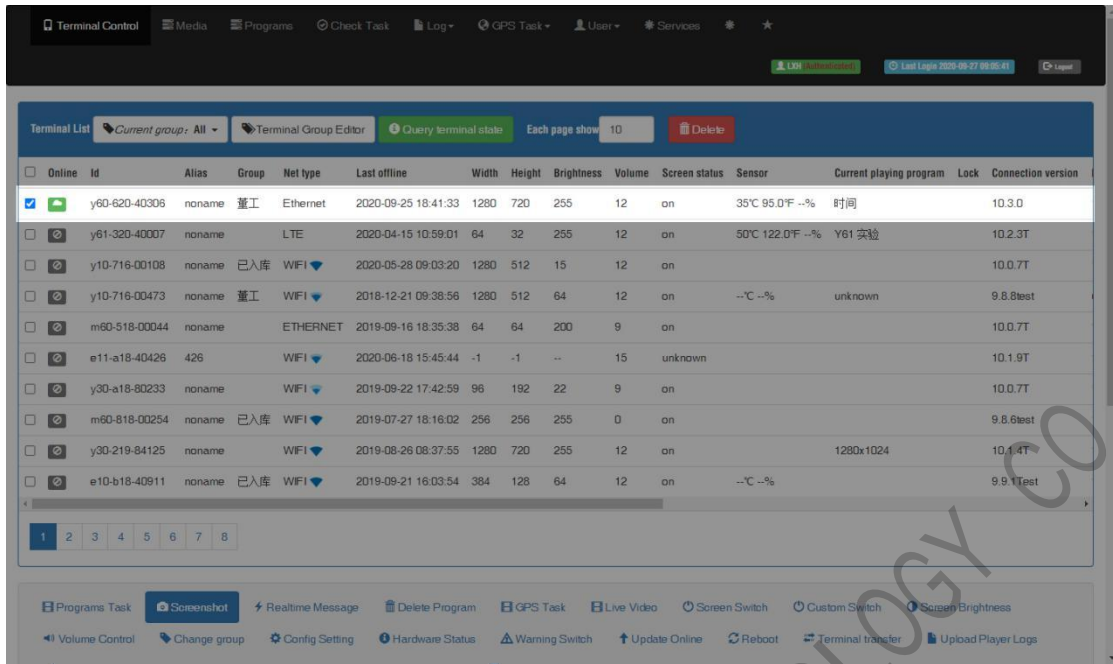
Hint Press Enter to separate next page, Press Shift + Enter to new a line. Define the following string instead of the value of sensors in terminal: %c is celcius, %f is fahrenheit, %h is humidity, (%c1 %f1) or (%c2 %f2) round to 1 or 2 digit(s) after the decimal point

Send Program

1. Click "create task quickly" button in the program list interface and will jump to the terminal interface directly.



2. Select the controller and send program



- In the bottom part of terminal interface, will see program task then choose the program task and click send.

